



multi•mounts®

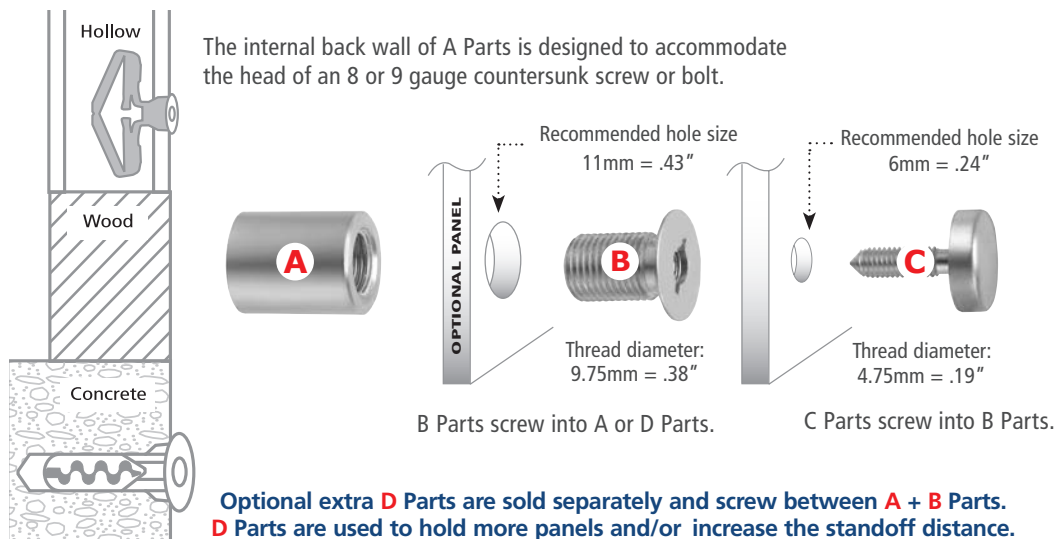
best for changeable graphic displays

Installing A Parts on a wall

- Use your front panel as the template to position panels on walls and align the hole centres.
- Ensure that the fixings you use to secure A Parts are suited to the type of wall they are being attached to e.g. when securing to wood use 8 gauge counter sunk head wood screws. When securing to plaster board, concrete, block etc. obtain wall anchors specifically designed for use with the wall material from your hardware store or specialist supplier.
- Ensure that your A Parts are secured strongly enough to hold the entire loading on the A+B+C Parts as well as the extra•spacers, D Parts - if they are used.

STANDARD PARTS

Are **A** + **B** + **C** Parts which are sold as a set

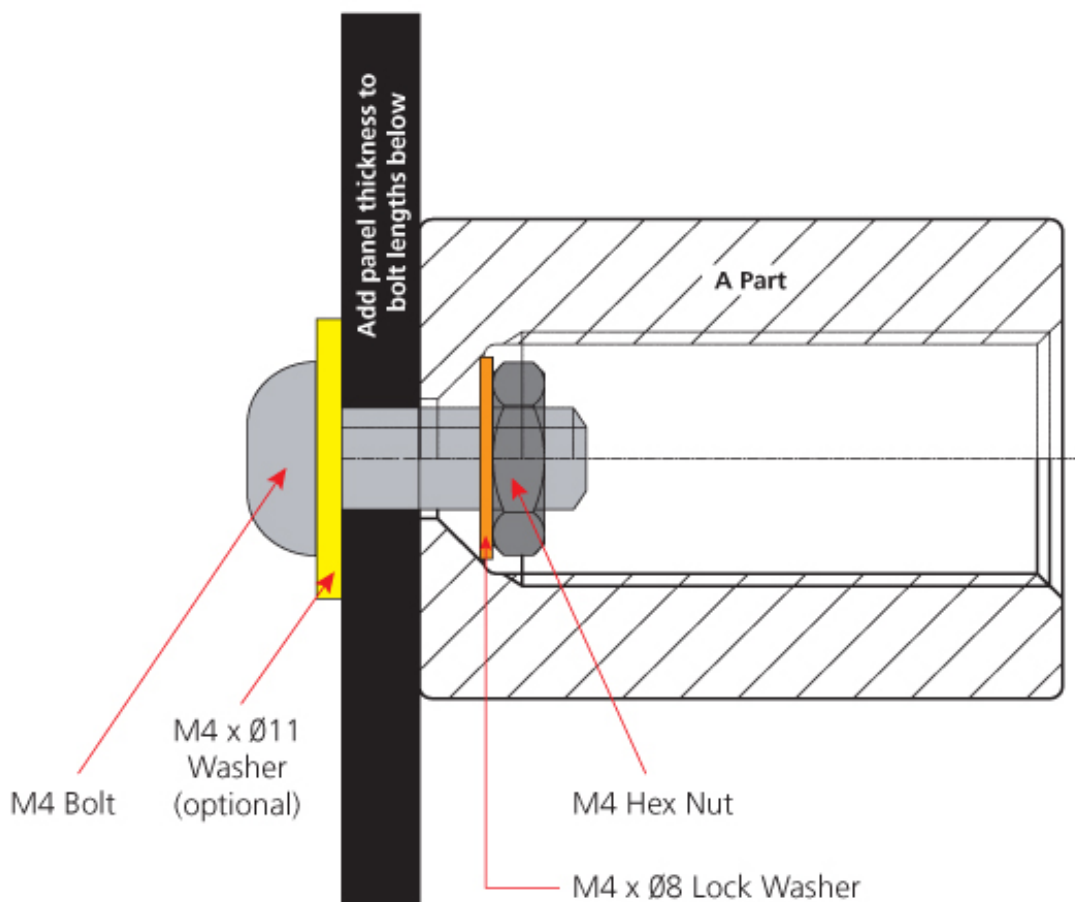


(Click to view)

multi•mounts®

www.pizazzsystems.com

Installing an A Part on a panel



Bolt Dimensions			Recommended Fastening System			
Button Head Bolt Thread Diameter	Thread Length	Overall Length				
M4	7mm	10mm				
.156"	.281"	.375"				

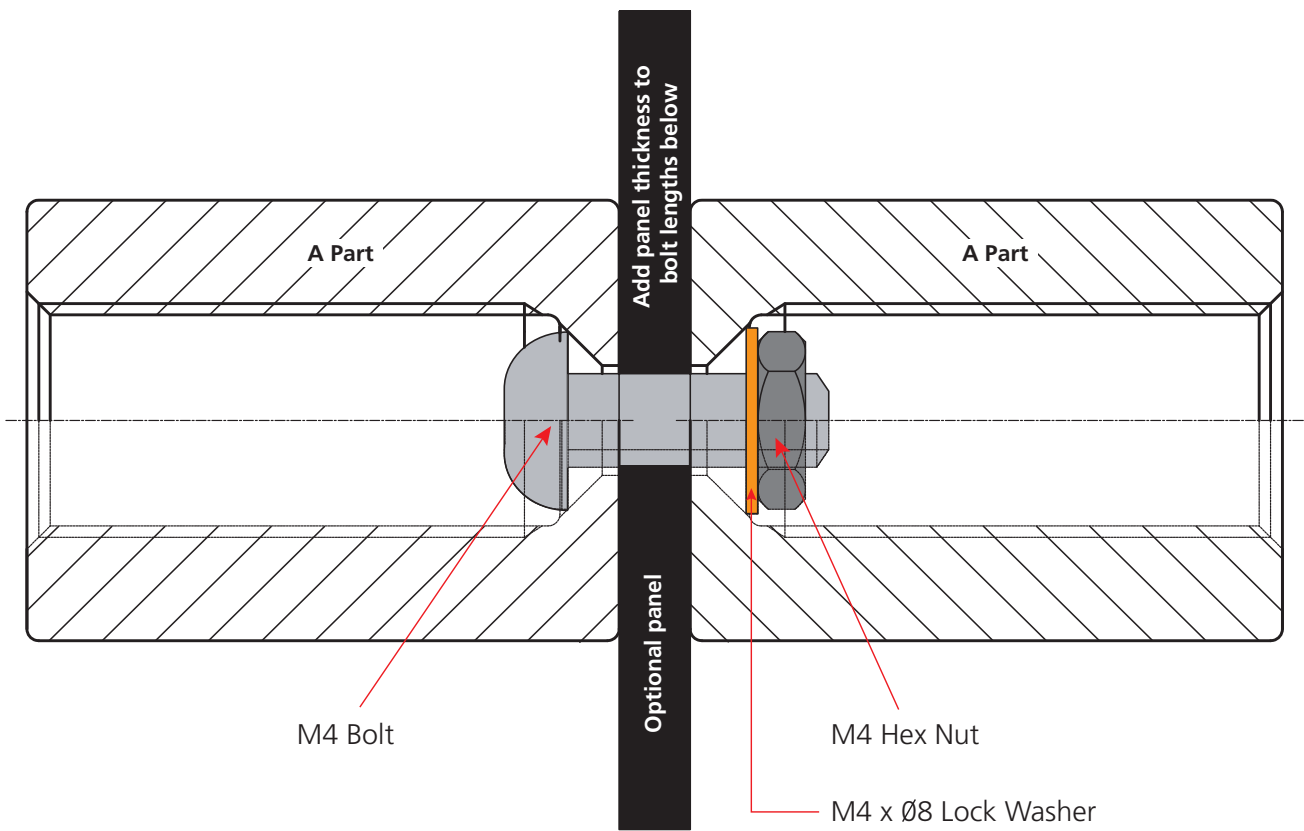
Add panel thickness to bolt lengths above

The intellectual property in this drawing is the property of Pizazz International Limited 40 William Pickering Drive, Auckland, New Zealand. Copyright © Pizazz International Limited 2011. Unauthorised use prohibited.

multi•mounts®

www.pizazzsystems.com

Installing A Parts back to back



Bolt Dimensions			Recommended Fastening System				The intellectual property in this drawing is the property of Pizazz International Limited 40 William Pickering Drive, Auckland, New Zealand. Copyright © Pizazz International Limited 2011. Unauthorised use prohibited.
Button Head Bolt Thread Diameter	Thread Length	Overall Length					
M4	7mm	10mm					
.156"	.281"	.375"					
Add panel thickness to bolt lengths above			M4 Bolt	M4 x Ø11 Washer	M4 x Ø8 Lock Washer	M4 Hex Nut	